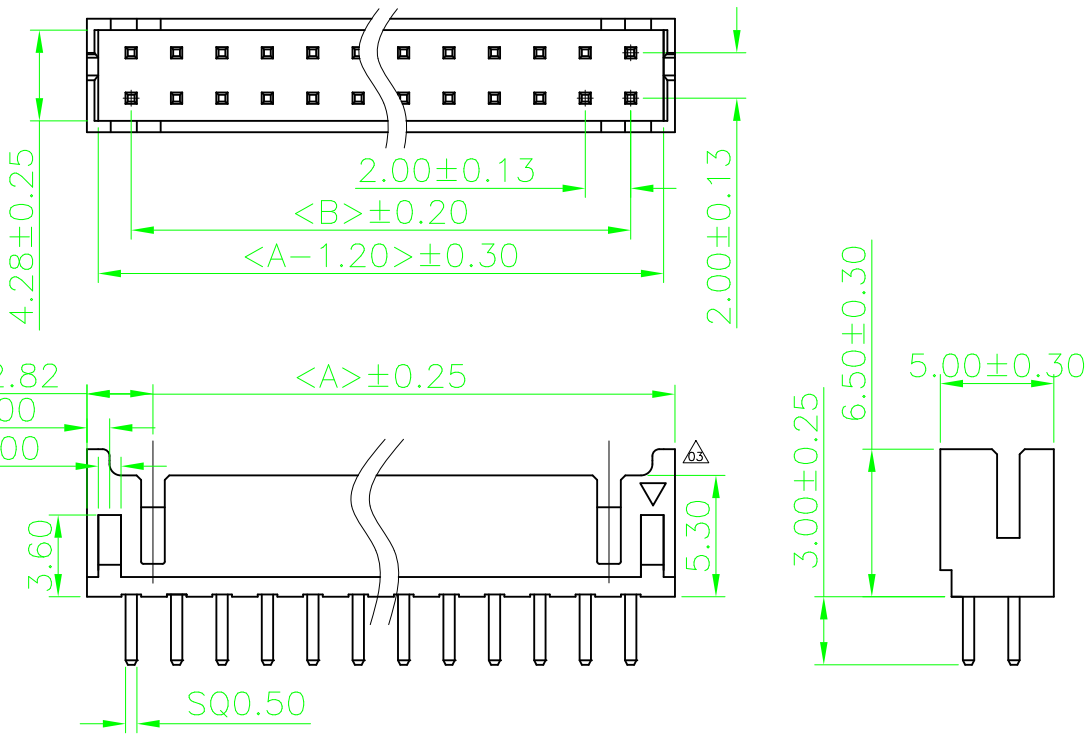


REV.	LOCAS.	DESCRIPTION	DATE	DRAWN
01		INITIAL RELEASE.	2010.11.8	
02	△	修改系列PIN數及整理圖面	2010.11.8	
03	△03	修正圖面，增加三角符號標示	2010.11.8	

NOTES:

Current Rating: 2A AC,DC  
Voltage Rating: 250V AC,DC  
Temperature Range: -25°C ~+85°C  
Contact Resistance: 20mΩ max  
Insulation Resistance: 1000 MΩ min  
Withstanding Voltage: 800V AC/minute  
Insulator:Nylon66 UL94V-0  
Conductor:Brass  
All materials must meet Geron requirement for environment protection

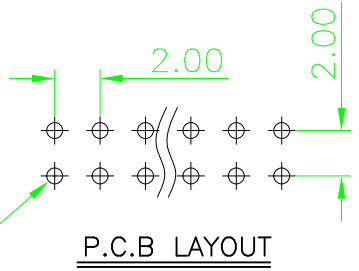


CIRCUITS	DIM A	DIM B
03	8.00	4.00
04	10.00	6.00
05	12.00	8.00
06	14.00	10.00
07	16.00	12.00
08	18.00	14.00
09	20.00	16.00
10	22.00	18.00
11	24.00	20.00
12	26.00	22.00
13	28.00	24.00
14	30.00	26.00
15	32.00	28.00
16	34.00	30.00
17	36.00	32.00
18	38.00	34.00
19	40.00	36.00
20	42.00	38.00

**Ordering Information**

GRC72 - XX XX Z01 X

No. of Pins per Row 1, 3-20  
Contact Plating 01=Tin 02=Gold Flash  
COLOR A=BLACK B=GRAY D=WHITE



P.C.B LAYOUT

GERON ELECTRONIC CO., LTD				<b>GENERAL TOLERANCE</b> X.* ± 5.0° X. ± 0.30 .X* ± 3.0° .X ± 0.25 .XX* ± 2.0° .XX ± 0.15 .XXX* ± 1.0° .XXX ± 0.10		DESIGN:	DATE: 2010.11.8	DWG. NO.	TITLE: PITCH 2.00 WAFER DUAL ROWS 180°
REV.	UNIT.	SCALE.	PAGE.	CHECKED:	DATE: 2010.11.8	GRC72-Z01			
03	mm	1:1	1/1	AUDITED:	DATE: 2010.11.8	PART NO. GRC72-XX-XX-Z01-X			